

# INSPECTION GUIDE INFANTRY TROOPS

**U B**

243

1  
547

---

HELMICK



Class \_\_\_\_\_

Book \_\_\_\_\_

Copyright No. \_\_\_\_\_

COPYRIGHT DEPOSIT.





# INSPECTION GUIDE *for* INFANTRY TROOPS

*Designed as an aid to the In-  
specting Officer and to the offi-  
cers and men under inspection*

BY

ELI A. HELMICK

*Colonel of Infantry, Inspector General  
United States Army*



**The Collegiate Press**  
**GEORGE BANTA PUBLISHING COMPANY**  
**MENASHA, WISCONSIN**

*Copyrighted 1917*  
*by*  
*THE GEORGE BANTA PUBLISHING COMPANY*

OCT 12 1917

© 1917 178545

## INTRODUCTION

It is quite as important to have a command completely equipped as it is to have it thoroughly trained. It is also important that a commander be able quickly to determine whether his command is completely equipped; and if not, what the shortages are. This cannot be done, however, with a command even as small as a company unless some systematic scheme or method is followed, and the difficulty becomes much greater as the size of the command increases.

The instructions in the Infantry Drill Regulations on this subject are not satisfactory. If a minute inspection of the rifles is made as therein prescribed, the inspector must handle each one. It is readily seen how impracticable this becomes with a war strength regiment or battalion. Even if there be time for it, the physical exertion involved in the operation would make it impossible.

The following system of inspecting and checking the field equipment of an infantry command is the result of a number of years' experience in inspecting infantry. If the instructions here provided for are carefully followed it will not be necessary for the inspecting officers to handle either arms or equipment, and if preparations have been properly

## *Inspection Guide for Infantry Troops*

made, a regiment can be minutely inspected and its equipment carefully checked in one day. But to do this it is *essential* that the equipment be displayed so that not only the various articles can be seen but the marking observed without handling. It is not contended that the method of arrangement described and illustrated is the only one or even the best, but it has been found satisfactory. What is contended is that *some system* must be followed or confusion will result and time will be wasted.

It is advisable that the checking be made by disinterested officers; hence arrangements should be made beforehand for an officer or officers of one company to check the equipment of another. In the lettered companies it is advisable to defer the checking of that part of the equipment to be made in ranks until the inspection of a battalion has been completed as company officers should be present with their company while it is being inspected.

For the checking, a sheet has been prepared for the property of regimental headquarters (sheet A), one for battalion headquarters (sheet B), one each for the property of the headquarters company (sheet C), the supply company (sheet D), machine gun company (sheet E), lettered companies (sheet F) and sanitary detachment (sheet G). The questions have been arranged in the



## *Inspection Guide for Infantry Troops*

order in which it is thought they should be taken up in the inspection. They cover all the property pertaining to the men and the organization to which they pertain.

It is essential that the camp be made complete in every detail and that all property, including the personal property of every officer from the colonel down, be displayed for inspection and checking.

If this method is carefully followed it will not only give exact knowledge of the completeness and serviceability of the equipment of the command but it will give also valuable instruction to officers of all grades in making efficient inspections.

It must not be forgotten, however, that the value of an inspection like that of any other military exercise depends largely upon the attitude of the commander. If he is conscientious and in earnest it will accomplish its purpose; if he makes it a perfunctory exercise, it will largely be time wasted.

The method of inspecting rifles and the question sheets used in checking equipment are those used by Brigadier General George Bell, Jr., U. S. A., formerly a member of the Inspector General's Department.

ELI A. HELMICK,  
*Colonel, Inspector General, U. S. Army.*



## *Inspection Guide for Infantry Troops*

### GUIDE FOR INSPECTING AND CHECKING THE FIELD EQUIPMENT OF AN INFANTRY COMMAND

The equipment assumed is equipment "A," with, or without rations, and with surplus kits.

1. **FORMATION:** Columns of companies at half company distance: baggage and combat wagons on right flank of column where companies can easily obtain equipment.

#### 2. **PREPARATION FOR INSPECTION:**

(a) Have flaps to ammunition pockets and First Aid pouches unsnapped and folded back so contents of pockets and pouches can be inspected and markings of pouches observed.

(b) Have identification tags exposed, the tape passing out between first and second button of shirt. If the tape comes out between buttons lower down the tag is liable to be drawn back in and hidden from view.

The preparation described in (a) and (b) should be made immediately after the column has been formed so that all organizations may be in absolute readiness for the inspection at the hour designated.

## *Inspection Guide for Infantry Troops*

(c) Cause rifles to be brought to the position of "Port," bolts removed and held in right hand by the side. (Plate 1).

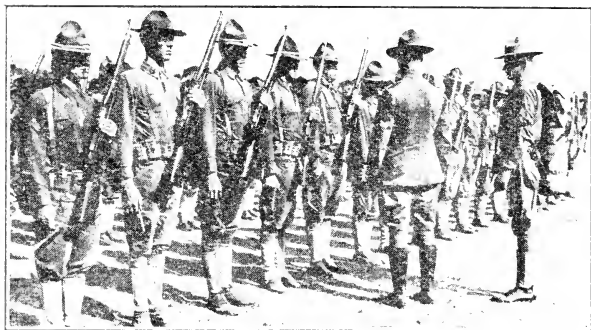


PLATE 1

(d) As soon as the inspector has passed him, cause each man to bring rifle to "right shoulder" (changing bolt to left hand), and depress the muzzle so that the barrel may be looked through from the rear. (Plate 2.)

(e) When the inspector has passed the rear of each man, have bolt replaced, position of "fix bayonets" assumed, bayonet drawn and held horizontally in the right hand, point to left, ring up and inclined to front. The bayonet should be

*Inspection Guide for Infantry Troops*

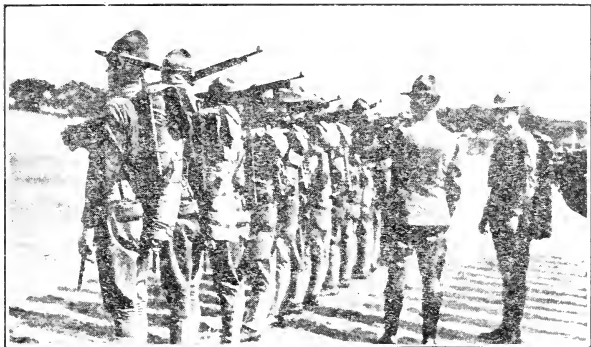


PLATE 2

held lightly between the thumb and fingers, back of the hand down, in order not to cover slot and ring of bayonet. (Plate 3.)



PLATE 3

## *Inspection Guide for Infantry Troops*

When inspection of bayonets is completed, cause them to be "fixed" and "unfixed" to see whether all can easily be attached and detached from the rifle.

(f) When the bayonets have been "unfixed," have oiler and thong cases and spare part containers removed and prepared for inspection, as follows: partially insert brush in the muzzle of the rifle, thong with weight attached hanging beside the barrel, the muzzle of which leans against the belt; remove the cover of oiler, and holding oiler in the left hand, insert the dropper into the oil with the right hand, and hold up, point of dropper down so a drop of oil will depend from the point as the inspector passes.

Remove the contents of spare parts container and hold them in the left hand so the inspector can see them as he passes. (Plate 4.)

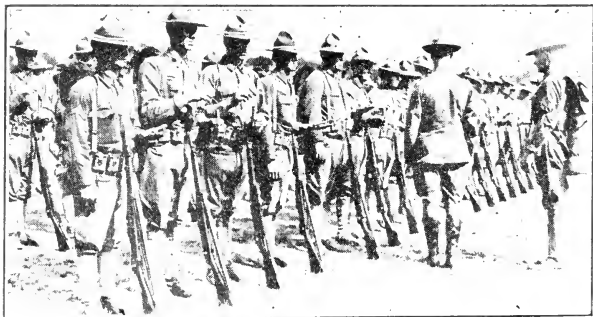


PLATE 4

## *Inspection Guide for Infantry Troops*

In order that there may be no delay, the inspector should inspect the succeeding company as to (a), (b), (c), (d) and (e) while the preparation described in (f) is being made. Position (f) should be retained until checking officer has completed the checking to be done in

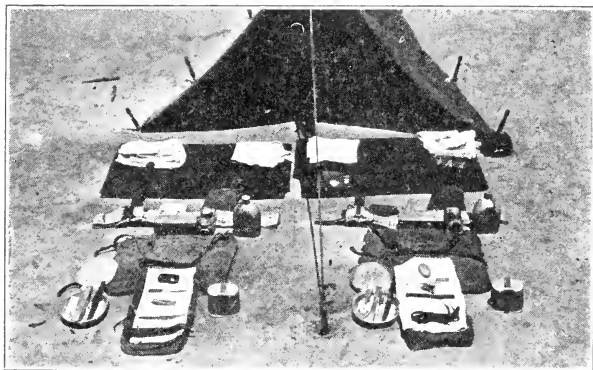


PLATE 5

### Arrangement of Equipment A

ranks. This should begin as soon as inspection of the battalion is completed.

3. As soon as checking in ranks of a battalion is completed, shelter tent camp is made and preparation for further inspection and checking carried out as follows:

## *Inspection Guide for Infantry Troops*

(a) **FIELD KIT**, (less poncho), arranged by each man immediately in front of his own half of shelter tent so the marking on each article can be seen. (See plate 5 for arrangement.)

The plate shows bacon and condiment can empty. If these are to be inspected filled, the lid of the bacon can should be removed. The

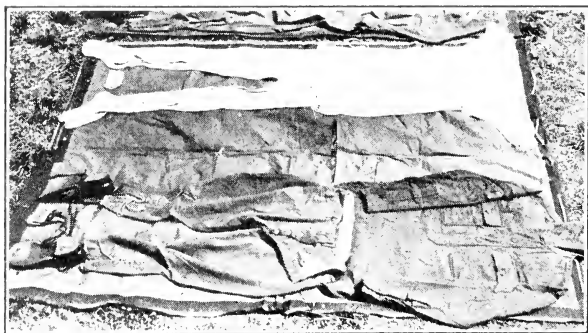


PLATE 6

tooth brush holder shown in the plate is not a prescribed article of the equipment.

(b) **SURPLUS KIT**: Spread poncho on ground about one yard in front of the personal kit, marking of poncho exposed; display the clothing on the poncho as follows:—O. D. shirt



## *Inspection Guide for Infantry Troops*

spread out, buttons up, with sleeves folded to show elbows; breeches spread out with waist band on waist of shirt, flap unbuttoned and button-hole side turned back to show button holes and buttons; shoes, soles up, at feet of breeches, extra shoe strings across soles; under-shirt and drawers similarly displayed at side of outer clothing with socks spread out at feet of drawers. (See plate 6.)

(c) Have company property displayed for inspection. In this display the water bag should

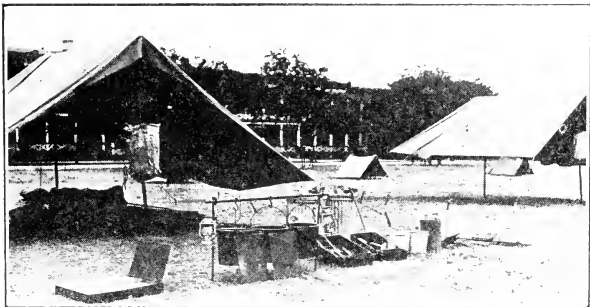


PLATE 7

be hanging up; fire irons erected and kettles and hooks attached; G. I. cans and bake pans separated and tops removed so they can be thorough-

## *Inspection Guide for Infantry Troops*

ly inspected and quickly checked. All containers, including field desk, should be open or ready to open promptly when inspector appears. (See plate 7.)

(d) Have property of regimental and battalion headquarters displayed, and the personal property of all officers so arranged that it can be quickly inspected and checked. (See plate 8.)

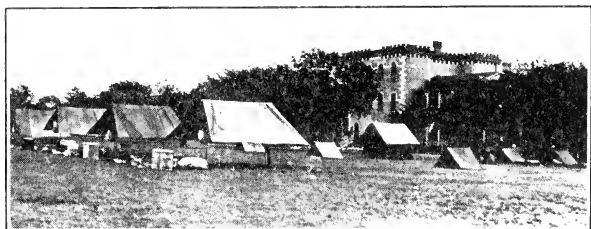


PLATE 8

(e) Have picket lines stretched and animals unsaddled or unpacked and ready for inspection of backs and feet.

(f) As soon as the shelter tent camp has been completed and property displayed for inspection, have the men sit on the ground in front of and facing their tents, remove their shoes and socks, drawing the latter, bottoms up,

## *Inspection Guide for Infantry Troops*

over their hands, and placing the former, soles up, beside their bare feet which rest on their leggins. (See plate 9.)



PLATE 9

This is the position of inspection of feet. The above description applies to Headquarters and Machine Gun Companies and Sanitary Detachments of the regiment.

(g) Have baggage and combat wagons, as soon as unloaded, assembled with remainder of train and held in readiness for such maneuvers in driving as the inspector may desire. At termination of this maneuvering cause the train to be again assembled and spare parts and accessories to be displayed for inspection and checking (plate 10), and the clothing and personal

*Inspection Guide for Infantry Troops*

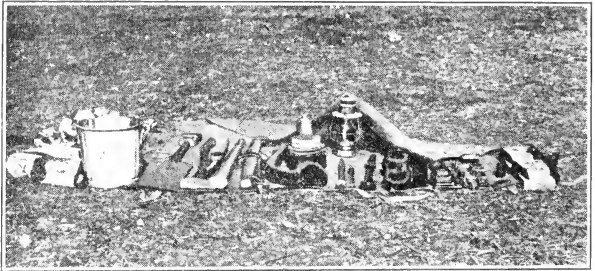


PLATE 10

equipment of members of the Supply Company, including surplus kits, to be made ready for inspection. (See plate 11.)

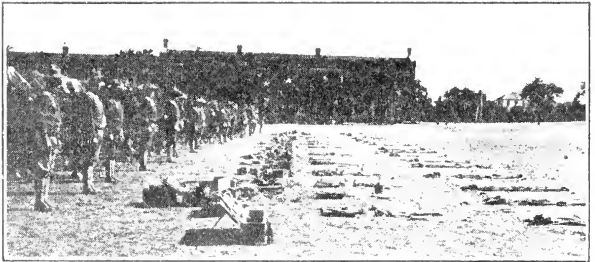


PLATE 11

# *Inspection Guide for Infantry Troops*

SHEET "A"

## QUESTIONS FOR AN INSPECTION OF EQUIPMENT "A" AND SURPLUS KITS PRESCRIBED IN EQUIPMENT "B"

(Regiment) . . . . .

### REGIMENTAL HEADQUARTERS

In submitting replies to questions an O. K., or check mark opposite question will indicate that there is no defect. Defects may be noted on separate sheets in pencil and signed by checking officer. In noting such defects, questions may be indicated by numbers, and thus save unnecessary writing.

### INFORMATION TO BE OBTAINED BY CHECKING OFFICER AFTER CAMP HAS BEEN MADE:

1. Did Regimental Headquarters have all articles mentioned below? If not, state what articles were short.

<i>Quartermaster:</i>	<i>No.</i>
a. Axes and helms . . . . .	1
b. Bedding Rolls . . . . .	3
c. Buckets, G. I. . . . .	1
d. Candles . . . . .	Supplied when necessary. (if no mineral oil)
e. Colors, National, silk . . . . .	1
f. Colors, Regimental, silk . . . . .	1
g. Desk, field, small and con- tents . . . . .	3

(For contents see Note 29, page 565, G. O. 39, W. D. 1915.)

## *Inspection Guide for Infantry Troops*

	<b>No.</b>
b. Flag, Chaplain's.....	1
i. Handcuffs, pairs.....	1
j. Lanterns, combination, complete.....	2
k. Matches, boxes.....	12
l. Nails, horseshoe, lbs.....	1
m. Oil, mineral, gallons.....	3
n. Pickaxes and helms.....	1
o. Salt, rock, lbs.....	1
p. Shoes, extra, for horses, lbs...	5
q. Shovels, S. H.....	1
s. Tents, shelter, complete, mounted .....	3
t. Pins, tent, shelter.....	10
u. Poles, tent, shelter.....	2
v. Grain, days, each animal....	2

2. Did Regimental Commander and staff have all their personal equipment? If not, what was short?

(Name) .....

(Rank and Regiment) .....

*Checking Officer.*

# *Inspection Guide for Infantry Troops*

SHEET "B"

## QUESTIONS FOR AN INSPECTION OF EQUIPMENT "A" AND SURPLUS KITS PRESCRIBED IN EQUIPMENT "B"

---

(Regiment) .....

(Battalion) .....

### BATTALION HEADQUARTERS

In submitting replies to questions, an O. K., or check mark opposite question will indicate that there is no defect. Defects may be noted on separate sheets in pencil and signed by the checking officer. In noting such defects, questions may be indicated by numbers, and thus save unnecessary writing.

### INFORMATION TO BE OBTAINED BY CHECKING OFFICER AFTER CAMP HAS BEEN MADE:

1. Did each Battalion have all the articles given below? If not, state what articles were short.

<i>Quartermaster:</i>	<i>No.</i>
a. Axes and helms.....	8
b. Bedding Rolls.....	2
c. Buckets, G. I.....	1
d. Candles.....	Supplied when necessary (if no mineral oil)
e. Colors.....	1
f. Desks, field, small and contents	1

(For contents see Note 29, page 565, G. O. 39, W. D. 1915.)

## *Inspection Guide for Infantry Troops*

### *No.*

g.	Handcuffs, pairs.....	1
h.	Lantern, combination, complete	1
i.	Matches, boxes.....	6
j.	Menders, harness.....	1
k.	Nails, horseshoe, pounds.....	2
l.	Oil, mineral, gallons.....	2
m.	Pickaxes and helms.....	8
n.	Salt, rock, lbs.....	1
o.	Shoes, extra, horse, lbs.....	2
p.	Shoes, mule, fitted, lbs.....	16
q.	Shoes, mule, extra, lbs. ....	4
r.	Shovels, S. H.....	8
s.	Sling, color O. D.....	1
t.	Tents, shelter, complete, mounted .....	1
	(Until exhausted—G. O. 22, W. D. 1915.)	
u.	Grain: Reserve, days (each wagon) .....	36 lbs.
v.	Rations: Reserve (each wag- on).....	2
w.	Rations: Field, days, per man on ration section.....	2
x.	Rations: Reserve, days, per man on ration section.....	1

### *Ordnance:*

y.	Packs, small arms ammunition	2
z.	Repair material, combat, chest or box (Arm repair chest)	1





*Inspection Guide for Infantry Troops*

SHEET "C"

QUESTIONS FOR AN INSPECTION OF  
EQUIPMENT "A" AND SURPLUS KITS  
PRESCRIBED IN EQUIPMENT "B"

---

(Regiment) .....

HEADQUARTERS COMPANY

In submitting replies to questions, an O. K., or a check mark, opposite the question will indicate that there is no defect. Defects may be noted on separate sheets in pencil and signed by the Checking Officer. In noting these defects questions may be indicated by number, and thus save unnecessary writing.

INFORMATION TO BE OBTAINED BY INSPECTING  
OFFICER:

1. Were the men well set up and soldierly in appearance?
2. Were the uniforms neat and clean?
3. Were the men cleanly shaven and was their hair closely trimmed?
4. Were the arms properly oiled, clean and free from rust?
5. Were the haversacks and packs uniformly and properly made up?
6. Was the camp properly made and was the equipment displayed as prescribed?

## *Inspection Guide for Infantry Troops*

7. Were the saddles and bridles in good condition?

8. Were bridles properly fitted?

9. Were all the mounted orderlies good horsemen? If not, who were not and in what were they deficient?

10. What were the general appearance and condition of the men's feet at inspection?

### INFORMATION TO BE OBTAINED BY CHECKING OFFICER WHILE COMPANY IS IN RANKS:

11. Did every man in the company have an identification tag marked properly with his name, rank, etc.?

12. How many officers at inspection?

13. How many enlisted men at inspection?

14. Had each enlisted man the complete equipment prescribed? If not, state shortages.

15. Were the prescribed arms and ammunition carried as ordered?

16. Had each musician his proper band instrument?

17. Were all the band instruments in good condition?

18. Were there any shortages in number of animals?

19. Any gray animals?

## *Inspection Guide for Infantry Troops*

20. Were the horses' tails docked? (Prohibited by A. R. 1068.)

21. Were the horses' manes and forelocks clipped?

(Can be done only under order of the regimental, or separate squadron, or battalion commander, A. R. 1068.)

### INFORMATION TO BE OBTAINED BY CHECKING OFFICER AFTER SHELTER CAMP HAS BEEN MADE

22. Had each enlisted man the complete equipment prescribed? If not, state shortage.

23. Was his clothing, including that in surplus kit, as prescribed and in good condition?

24. At the inspection, how many men had corns, or needed treatment for their feet?

25. Were any cases of "dhobie" or other itch found on feet? If so, state how many.

26. Were all men receiving treatment for bad feet when needed?

27. Were all socks worn at inspection in good condition? If not, how many were in bad order?

28. How many did not wear woolen socks? If any, state by whom authority to wear other than woolen was given and the necessity for same.

29. Were all shoes worn at inspection "broken in" and in serviceable condition?

## *Inspection Guide for Infantry Troops*

30. Was all clothing serviceable and only that prescribed?

31. Were the Descriptive Cards of public animals complete in all particulars, especially as regards hoof marks?

32. Were there any animals with sore backs? If so, how many?

33. Was every animal properly branded?

34. Was every animal properly hoof marked?

35. Was every animal properly shod?

36. Were animals watered and fed three times a day as required?

37. Did any animals have thrush or scratches? If so, how many?

38. Was every animal serviceable and suitable for work required? If not, answer in full.

39. Were any animals injured or sick? If so, state number, the nature of injury or cause of sickness.

40. Were the animals properly groomed and taken care of? How many not so?

41. Were all the animals in good condition?

42. Had this company:

a. 1 marking outfit for leather?

b. 1 marking outfit for metal?

c. 1 stencil outfit?

d. 1 stencil, personal equipment?

e. 1 set wagon stencils?

*Inspection Guide for Infantry Troops*

f. 1 arm repair chest?

g. 5 (4 only, if chaplain has field rank) sets officer's horse equipment?

**43.** Had the company all of its organization equipment as per G. O. 39, W. D. 1915, as amended?

(Name) .....

(Rank and Regiment) .....

*Checking Officer.*

*Inspection Guide for Infantry Troops*

SHEET "D"

QUESTIONS FOR AN INSPECTION OF  
EQUIPMENT "A" AND SURPLUS KITS  
PRESCRIBED IN EQUIPMENT "B"

(Regiment) .....

SUPPLY COMPANY

In submitting replies to questions, an O. K., or a check mark, opposite the question will indicate that there is no defect. Defects may be noted on separate sheets in pencil and signed by the Checking Officer: In noting these defects, questions may be indicated by number, and thus save unnecessary writing.

INFORMATION TO BE OBTAINED BY INSPECTING  
OFFICER:

1. Were the men cleanly shaven and was their hair closely trimmed? Were their uniforms neat and clean? Were their arms properly oiled and free from rust?
2. Did the appearance of the train indicate careful supervision and inspection by the commanding officer of the Supply Company?
3. Were wagon covers neatly and uniformly lashed?
4. Did appearance of animals indicate proper grooming?

## *Inspection Guide for Infantry Troops*

5. Were all bridles and collars properly fitted?
6. Did the breeching fit in all cases?
7. Were the harnesses in good condition? If not, how many were not so?
8. Were all the riding animals pertaining to the train in good condition and their equipment in good order?
9. Were the wagons in good condition? If not, in what particulars were they lacking?
10. Were wagoners competent? Did they know how to handle and care for their animals?

### INFORMATION TO BE OBTAINED BY CHECKING OFFICER:

11. How many officers at inspection?
12. How many enlisted men at inspection?
13. Were there any shortages in the personnel of the train? If so, state shortages.
14. Had each man the complete equipment prescribed? If not, state shortages.
15. Was their clothing serviceable, all that is prescribed, and in good condition? Report any shortages.
16. Were the prescribed arms on hand?
17. Was the proper amount of ammunition on hand? Was it carried as prescribed?



## *Inspection Guide for Infantry Troops*

18. Were the identification tags marked properly with name, company, rank, etc.?

19. Was every animal properly branded?

20. Was every animal properly hoof marked?

21. Was every animal properly shod?

22. Were animals watered and fed three times a day as required?

23. Had any animals thrush or scratches? If so, how many?

24. Was every animal serviceable and suitable for work required? If not, answer in full.

25. Were any animals injured or sick? If so, state number, and nature of injury and cause of sickness.

26. Were the animals properly hitched up in all cases? If not, what were the faults observed?

27. Were the Descriptive Cards of public animals complete in all particulars, especially as regards hoof marks?

28. Were there any shortages in the number of animals, either riding or draft?

29. Any gray animals?

30. Were all wagons numbered and marked as prescribed?

31. Were all spare parts numbered with the number of wagon?

*Inspection Guide for Infantry Troops*

32. Were all the prescribed spare parts carried?

33. Were bolts, buckles, rings, snaps, etc., for wagons and ambulances checked up and counted to see that they agree with the list in General Orders No. 39, W. D. 1915?

34. Had the company

(a) 1 stencil personal equipment?

(b) 2 sets officer's horse equipment?

35. Had it the prescribed blacksmith's and saddler's tools?

36. Had it all of its organization equipment as prescribed in G. O. 39, W. D., 1915, as amended?

(Name) .....

(Rank and Regiment) .....

*Checking Officer.*

*Inspection Guide for Infantry Troops*

SHEET "E"

QUESTIONS FOR AN INSPECTION OF  
EQUIPMENT "A" AND SURPLUS KITS  
PRESCRIBED IN EQUIPMENT "B"

---

(Regiment) . . . . .

MACHINE GUN COMPANY

In submitting replies to questions, an O. K., or a check mark opposite the question will indicate that there is no defect. Defects may be noted on separate sheets in pencil and signed by the Checking Officer. In noting these defects, questions may be indicated by number and thus save unnecessary writing.

INFORMATION TO BE OBTAINED BY INSPECTING  
OFFICER:

1. Were the men well set up and soldierly in appearance?
2. Were the uniforms neat and clean?
3. Were the men cleanly shaven, and was their hair closely trimmed?
4. Were the arms properly oiled, clean and free from rust?
5. Were the haversacks and packs uniformly and properly made up?
6. Was the camp properly made and was the equipment displayed as prescribed?

## *Inspection Guide for Infantry Troops*

7. What was the conditions of the arms?
8. Was every animal serviceable and suitable for the work required? If not, answer in full.
9. Did all the aparejos fit the animals?
10. What were the general appearance and condition of the men's feet at inspection?

### INFORMATION TO BE OBTAINED BY CHECKING OFFICER WHILE COMPANY IS IN RANKS:

11. How many officers at inspection?
12. How many enlisted men at inspection?
13. Were there any shortages in the personnel of the Machine Gun Company? If so, what?
14. Were the prescribed arms on hand?
15. Were there any shortages in the number of animals?
16. Any gray animals?
17. Was the ammunition prescribed for each gun carried properly?
18. Were the identification tags marked properly with name, company, rank, etc.?

### INFORMATION TO BE OBTAINED BY CHECKING OFFICER AFTER SHELTER TENT CAMP HAS BEEN MADE:

19. Had each man the complete equipment prescribed? If short, what articles missing?

## *Inspection Guide for Infantry Troops*

20. At inspection, how many men had corns, or needed treatment for their feet?

21. Were any cases of "dhobie" or other itch found on feet at inspection? How many?

22. Were all men receiving treatment for bad feet when needed?

23. (a) Were all socks worn at inspection and in surplus kits in good condition? (b) How many were not?

24. How many men did not wear woolen socks? If any, state by whom authority to wear other than woolen was given and the necessity for same.

25. Were all shoes worn at inspection and in surplus kits in serviceable condition?

26. Was all clothing worn at inspection and in surplus kits in serviceable condition?

27. Were the enlisted men properly instructed in packing the animals?

28. Was the proper amount of ammunition on hand?

29. Was every animal properly branded?

30. Was every animal properly hoof marked?

31. Was every animal properly shod?

32. Were animals watered and fed three times a day as required?

33. Had any animal thrush or scratches? If so, how many?

## *Inspection Guide for Infantry Troops*

34. Were horses' tails docked? (Prohibited by A. R. 1068.)

35. Were horses' manes and forelocks clipped?

(Can be done only under order of a regimental, or separate squadron or battalion commander, as prescribed in A. R. 1068.)

36. Were any animals injured or sick? If so, state number, nature of injury and cause of sickness.

37. Were there any animals with sore backs? If so, how many?

38. Were the animals properly groomed and taken care of? How many not so?

39. Were all bridles properly fitted?

40. Were the aparejos in good condition and properly set up?

41. (a) Were the machine guns complete in all parts? (b) Were the telescopic sights, guns and all parts in good condition?

42. Was the company provided with all prescribed Machine Gun equipment?

43. Had the company

- (a) 1 stencil, personal equipment?
- (b) 1 Range Finder with carrying case and tripod?
- (c) 1 Pistol cleaning kit?
- (d) 4 sets officer's horse equipment?

*Inspection Guide for Infantry Troops*

44. Had the company its complete company organization equipment as prescribed in G. O. 39, W. D. 1915, as amended?

45. Had the company the prescribed blacksmith's and saddler's tools?

(Name) .....

(Rank and Regiment) .....

*Checking Officer.*

# *Inspection Guide for Infantry Troops*

SHEET "F"

## QUESTIONS FOR AN INSPECTION OF EQUIPMENT "A" AND SURPLUS KITS PRESCRIBED IN EQUIPMENT "B"

(Regiment) .....

(Company) .....

### LETTERED COMPANIES

In submitting replies to questions, an O. K. or a check mark opposite the question will indicate that there is no defect. Defects may be noted on separate sheets in pencil and signed by the Checking Officer. In noting these defects, questions may be indicated by number and thus save unnecessary writing.

### INFORMATION TO BE OBTAINED BY INSPECTING OFFICER :

1. Were the men well set up and soldierly in appearance?
2. Were the uniforms neat and clean?
3. Were the men cleanly shaven and was their hair closely trimmed?
4. Were the arms properly oiled, clean and free from rust?
5. Were the haversacks and packs uniformly and properly made up?



## *Inspection Guide for Infantry Troops*

6. Was the camp properly made and was the equipment displayed as prescribed?

7. What were the general appearance and condition of the men's feet at inspection?

### INFORMATION TO BE OBTAINED BY CHECKING

#### OFFICER WHILE COMPANY IS IN RANKS:

8. How many officers at inspection?

9. How many enlisted men at inspection?

10. Was proper number of rounds of ammunition in belts as prescribed, and was it carried properly in every pocket?

11. Were there any defective pockets in the ammunition belts?

12. Were there any canteen covers unserviceable?

13. Were all First Aid packets in serviceable condition and carried as prescribed?

14. (a) Were all First Aid pouches serviceable; (b) how many unserviceable?

15. How many rifles at the inspection?

16. Did every rifle have serviceable brush and thong; also oil as prescribed?

17. (a) Were the two telescopic sights and the two rifles in each company fitted for those sights carried? (b) If not, why not?

## *Inspection Guide for Infantry Troops*

18. Were the bayonets and scabbards clean and in good condition?

19. Was the entire equipment uniformly carried?

20. Were the haversacks uniformly and properly packed, and were all straps for carrying them serviceable in every way?

21. Was the bacon can carried top up? (When rations are ordered carried.)

22. Was the pack properly and uniformly packed?

23. Were intrenching tools complete in each squad and carried as prescribed?

24. Did every man have a properly marked identification tag with his name, company, rank, etc.?

25. Did 1st sergeants and musicians have pistols; were they clean and serviceable, and was prescribed ammunition carried properly?

26. Did each 1st sergeant carry a watch compass, a pair of field glasses EE, a five-foot tape and whistle?

27. Did each sergeant carry a watch compass? Did two sergeants in each company carry field glasses EE?

## *Inspection Guide for Infantry Troops*

28. Did each bugler carry a bugle, a bugle sling, a field glass (A or B), a flag kit (Infantry combination), a wire cutter and carrier, a field message book, a pencil and a whistle? (Par. 338, S. C. M. 7, 1915.)

### INFORMATION TO BE OBTAINED BY CHECKING OFFICER AFTER SHELTER TENT CAMP HAS BEEN MADE:

29. (a) Did each officer have full equipment as prescribed? (b) State shortages.

30. At inspection, how many men had corns or needed treatment for their feet?

31. (a) Were any cases of "dhobie" or other itch found on feet? (b) How many?

32. Were all men receiving treatment for bad feet when needed?

33. (a) Were all socks worn at inspection in good condition? (b) How many were in bad order?

34. How many men did not wear woolen socks? If any, state by whom authority to wear other than woolen was given, and necessity for same.

35. Were all shoes worn at inspection "broken in" and in serviceable condition?

## *Inspection Guide for Infantry Troops*

36. Was all clothing serviceable, and only that prescribed?

37. Were canteens full and in good condition?

38. Were cups in good condition?

39. Were all articles prescribed for haversacks carried and were they in good serviceable condition?

40. Were the contents of condiment cans as prescribed for number of days rations ordered?

41. (a) Were all prescribed articles carried in the pack? (b) Were they all in good condition and serviceable?

42. Was all equipment properly marked as prescribed with company, regiment, and number?

(All articles are not required to be marked exactly alike, but each kind of article should be marked in the same place and manner. Articles should be marked only as prescribed for the article itself.)

43. Where were the following articles carried; viz: (a) screw drivers (rifle min. 12, max. 18 per company); (b) roll of adhesive tape (1 roll to every 20 men per annum, to be used in field only); (c) boxes of foot powder ( $\frac{1}{4}$  pound can per man per annum, to be used in the field only—M. M. D. pp. 843, 255); (d) housewives and (e) jointed cleaning rods (12 per company)?

## *Inspection Guide for Infantry Troops*

### SURPLUS KITS

44. Did each man inspected have a surplus kit complete as prescribed?

45. (a) Was each pair of shoes in surplus kit "broken in" and serviceable? (b) How many were unserviceable?

46. (a) Was every pair of woolen socks in surplus kits inspected? (b) How many were unserviceable?

47. (a) Was every suit of under clothes in the surplus kits inspected? (b) How many were unserviceable?

48. (a) Was every shirt, O. D., in surplus kits, inspected? (b) How many were unserviceable?

49. (a) Was every pair of breeches in surplus kits inspected? (b) How many were unserviceable?

50. (a) Was every extra pair of shoe lacings in surplus kits inspected? (b) How many were unserviceable?

51. Did each company have all the articles given below? If not, state what articles were short:

## *Inspection Guide for Infantry Troops*

<i>Quartermaster:</i>	<i>No.</i>
a. Axes and helves.....	2
b. Bags, water sterilizing.....	1
c. Bars, mosquito, single.....	50
d. Bedding rolls.....	1 for each officer.
e. Buckets, G. I.....	2
f. Candles (if no oil carried).....	—
g. Cooking utensils, March kit.....	1
	(G. O. 39/15, 8/15, 22/15.)
h. Desk, field, small and contents.....	1
	(G. O. 39/15-8/15.)
i. Head nets, mosquito.....	7
j. Lanterns, combination, complete....	2
k. Matches, boxes.....	24
l. Oil, mineral, gals.....	3
m. Oil, Neatsfoot, pints.....	2
n. Pick axes and helves.....	2
o. Powder, Hypo. of lime, tubes.....	50
p. Shovels, S. H.....	2
q. Soap, issue, lbs.....	12
r. Stretcher, shoe.....	1
s. Tents, shelter, complete.....	3
t. Tents, fly, wall.....	1
u. Barber kit.....	1
	(G. O. 39/15.)
v. Litters.....	1
w. Rations-Field, days per man.....	2
x. Rations-Reserve, days per man.....	1

*Inspection Guide for Infantry Troops*

*No.*

*Ordnance:*

7. Stencil, personal equipment..... 1

(Name) .....

(Rank and Regiment) .....

*Checking Officer.*

*Inspection Guide for Infantry Troops*

SHEET "G"

QUESTIONS FOR AN INSPECTION OF  
EQUIPMENT "A" AND SURPLUS KITS  
PRESCRIBED IN EQUIPMENT "B"

---

(Regiment) .....

SANITARY DETACHMENT

In submitting replies to questions, an O. K. or check mark opposite the question will indicate that there is no defect. Defects may be noted on separate sheet in pencil and signed by Checking Officer. In noting these defects, questions may be indicated by numbers, and thus save unnecessary writing.

INFORMATION TO BE OBTAINED BY INSPECTING  
OFFICER:

1. Were the men well set up and soldierly in appearance?
2. Were the uniforms neat and clean?
3. Were the men cleanly shaven and was their hair closely trimmed?
4. Were the arms properly oiled, clean and free from rust?
5. Were the haversacks and packs uniformly and properly made up?



## *Inspection Guide for Infantry Troops*

6. Was the camp properly made, and was the equipment displayed as prescribed?

7. Was the entire equipment uniformly carried?

### INFORMATION TO BE OBTAINED BY THE CHECKING OFFICER WHILE DETACHMENT IS IN RANKS:

8. How many officers at inspection?

9. How many enlisted men at inspection?

10. Was ammunition the amount prescribed, and was it carried properly?

11. Were there any defective magazine pockets?

12. Were any canteen covers unserviceable?

13. Were all First Aid packets in serviceable condition and carried as prescribed?

14. (a) Were all First Aid pouches serviceable? (b) How many unserviceable?

15. How many pistols at the inspection?

16. Were the haversacks and straps serviceable?

17. Was the roll properly and uniformly packed?

18. Did every man have a properly marked identification tag with his name, detachment, rank, etc.?

*Inspection Guide for Infantry Troops*

19. Did the Detachment have the proper number of animals?

INFORMATION TO BE OBTAINED BY THE CHECKING OFFICER AFTER SHELTER TENT CAMP HAS BEEN MADE:

20. Did each Medical Officer have the following individual equipment, (Par. 864, M. M. D.):

a. Belt, web, Medical Officer's.....	1	} To be supplied as soon as available.
b. Case, instrument (Par. 919).....	1	
c. Case, medicine (Par. 920).....	1	
f. Syringe, hypo. (Par. 956).....	1	
d. Diagnosis tags, book.....	1	
e. Flask, empty, for morphine.....	1	
g. Needles, extra for same.....	12	
h. Thermometer, clinical.....	1	

21. At inspection, how many men had corns or needed treatment for their feet?

22. What were the general appearance and condition of feet at inspection?

23. (a) Were any cases of "dhobie" or other itch found on feet? (b) How many?

24. Were all men receiving treatment for bad feet when needed?

25. (a) Were all socks worn at inspection in good condition? (b) How many were in bad order?

## *Inspection Guide for Infantry Troops*

26. How many men did not wear woolen socks; if any, state by whom authority to wear other than woolen was given, and the necessity for same.

27. Were all shoes worn at inspection "broken in" and in serviceable condition?

28. Was all clothing serviceable, and only that prescribed?

29. Were canteens full and in good condition?

30. Were cups in good condition?

31. Were all articles prescribed for haversack carried, and were they in good serviceable condition?

32. Were the contents of ration bags as prescribed for number of days rations ordered?

33. (a) Were all prescribed articles carried in roll? (b) Were they all in good condition and serviceable?

34. Did each enlisted man have the following individual equipment:

a. Belt, web, M. D.....	1	} To be supplied as soon as available.
b. Belt, web, contents of (Par. M. M. D. 907).....	1	
c. Hand axe, Inf. and carrier.....	1	
d. Pouch for diagnosis tags and instru- ments.....	1	
e. Ration bags, pairs.....	1	

## *Inspection Guide for Infantry Troops*

35. Was all the equipment properly marked as prescribed?

(All articles are not required to be marked exactly alike, but each kind of article should be marked in the same place and manner. Articles should be marked only as prescribed for the article itself.)

36. Did each officer and each mounted enlisted man have all his horse equipment?

37. Were animals in good condition and well shod?

38. Were any animals docked or roached?

39. Was the harness well cared for?

40. Did the collars fit the animals?

41. Were the ambulances in good condition and fully equipped?

### SURPLUS KITS

42. Did each man inspected have a surplus kit, completed as prescribed?

43. (a) Was each pair of shoes in surplus kit "broken in" and serviceable? (b) How many were unserviceable?

44. (a) Was every pair of woolen socks in surplus kits inspected? (b) How many were unserviceable?

## *Inspection Guide for Infantry Troops*

45. (a) Was every suit of under clothes in surplus kits inspected? (b) How many were unserviceable?

46. (a) Was every shirt, O. D. in surplus kits inspected? (b) How many were unserviceable?

47. (a) Was every pair of breeches in surplus kits inspected? (b) How many were unserviceable?

48. (a) Was every extra pair of shoe laces in surplus kits inspected? (b) How many were unserviceable?

49. Did the detachment have all the articles given below? If not, state what articles were short:

	<i>No.</i>
a. Bars, mosquito.....	8
b. Candles.....	.
c. Desk, field, No. 2.....	1
d. Head nets.....	2
e. Horses, for men.....	6
f. Horses, for officers.....	.
g. Matches.....	6
h. Nails, horse shoe, pounds.....	2
i. Oil, gallons.....	2
j. Oil, Neatsfoot, pints.....	1
k. Salt, rock, lbs. ....	2

## *Inspection Guide for Infantry Troops*

No.

l. Extra shoes:	
1. For horses, lbs.....	9
2. For mules, lbs.....	1
m. Housewives.....	2
n. Soap, lbs.....	3
o. Tents, shelter, complete.....	1
p. Tents, shelter, complete, small—(until exhausted)	1
q. Pack Mules, with halter and strap.....	1

### *Loaded on right side of pack:*

r. Medical and surgical chest.....	1
------------------------------------	---

### *Loaded on left side of pack:*

s. Axe, short handled.....	1
t. Box, pack mule, No. 1.....	1
u. Candles, lantern.....	8
v. Guidons, ambulances (without staff).....	2
w. Lanterns, folding.....	2
x. Lime, hypo chlorite, tubes.....	10
y. Litters, with slings.....	9
z. Nails, horseshoe, lbs.....	2
aa. Shoes, mule fitted.....	2
bb. Shoes, fitted, for mounts.....	18
cc. Surgical dressings, box of (contents only).....	1
dd. Wire cutters.....	1

### *Loaded on top of Pack:*

ee. Bag, nose.....	1
ff. Bag, water, sterilizing.....	1
gg. Brush, horse.....	1
hh. Bucket, G. I.....	1
ii. Comb, curry.....	1

*Inspection Guide for Infantry Troops*

jj. Fly, wali tent, small, with ropes..... 1  
kk. Pack saddle..... 1  
ll. Pins, tent, small..... 6

(Name) .....

(Rank and Regiment) .....

*Checking Officer.*



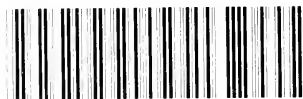








LIBRARY OF CONGRESS



0 011 521 973 A